

## GUIDELINES &amp; CONTROL DATA

Doors/Length	24hr Energy Usage (kWh)	Superheat Set Point @ Bulb (°F)	Discharge Air (°F)	Discharge Air Velocity (FPM)
2	11.1	6 - 8	33	230
3	12.2	6 - 8	33	230
4	16.2	6 - 8	33	230
5	17.4	6 - 8	33	230

## CONDENSING UNIT DATA

Case Length	Volts	Phase	Frequency (Hz)	Horsepower	Running Load Amps (RLA) (Amps)	Locked Rotor Amps (LRA) (Amps)	Refrigerant	Lbs. of Refrigerant
2 doors	208	1	60	1/3	4.2	16.8	R404A	2.2
3 doors	208	1	60	1/3	4.2	16.8	R404A	2.6
4 doors	208	1	60	1/3	6.0	29.0	R404A	3.2
5 doors	208	1	60	1/2	9.2	33.6	R404A	3.5

## SYSTEM REQUIREMENTS DATA

Case Length	Volts	Phase	Frequency (Hz)	Provided Overcurrent Protection
2-door	208	1	60	20
3-door	208	1	60	20
4-door	208	1	60	20
5-door	208	1	60	20

## DEFROST DATA

Defrosts Per Day	Run-Off Time (Min)	Timed-Off Defrost	
		Fail-Safe (Min)	Termination Temp (°F)
2	0	60	40

## NOTES:

- Listed discharge air velocity represents the average velocity at the peak of defrost.
- Temperature and defrost settings listed above are recommended start-up settings. Final operational settings may need to be adjusted for the store conditions in which the case operates.
- The recommended evaporator temperatures may need to be adjusted based on system setup, store conditions, etc. The minimum recommended evaporator temperature is 4°F below the listed evaporator temperature.
- 



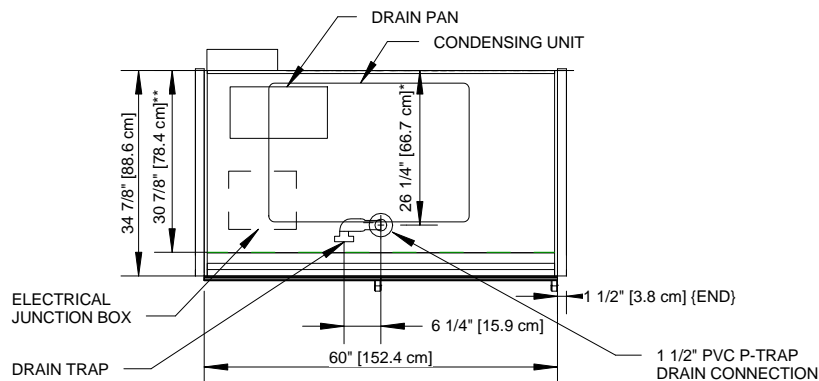
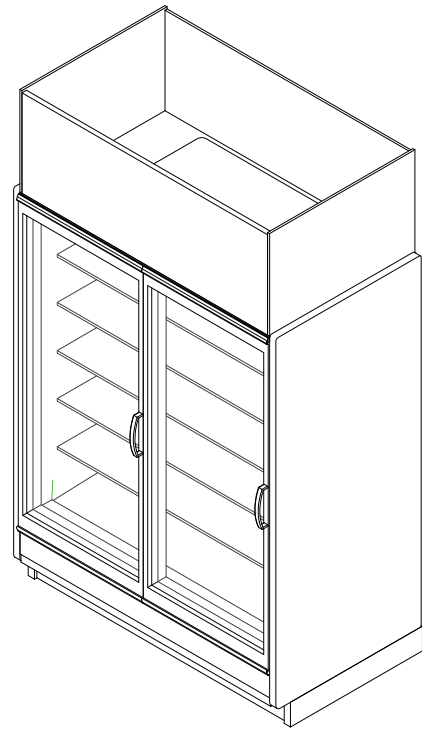
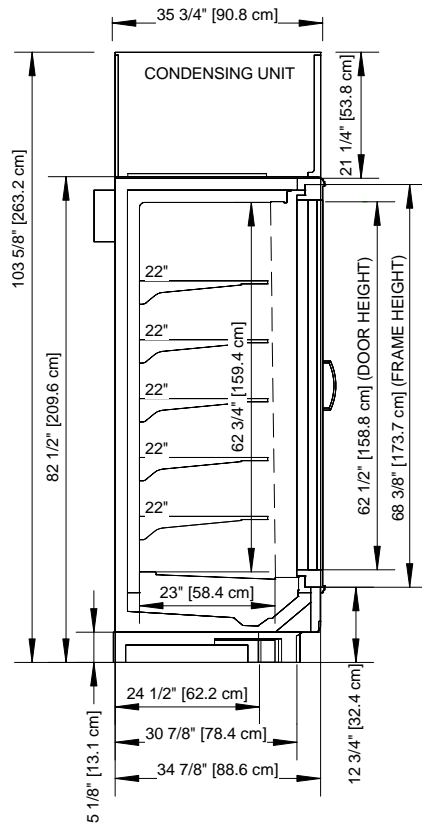
COMPONENT

ALL MEASUREMENTS ARE TAKEN PER ASHRAE-72-2005 SPECIFICATIONS. HILLPHOENIX REFRIGERATED DISPLAY CASES FOR SALE IN THE UNITED STATES MEET OR EXCEED DEPARTMENT OF ENERGY EFFICIENCY REQUIREMENTS.

JNRBHA-PV

Rev Date:	Rev #	Revision Description:
06/16/16	0	

**Hillphoenix**  
A DOVER COMPANY



### NOTES:

\* : STUB-UP AREA

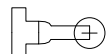
\*\* : RECOMMENDED STUB-UP CENTERLINE FOR ELECTRICAL AND HUB DRAINS

- ENDS ADD APPROXIMATELY 1" TO CASE HEIGHT, 1/2" TO THE BACK & 1" TO THE FRONT
- A 2" MINIMUM AIR GAP IS REQUIRED BETWEEN THE REAR OF THE CASE AND THE WALL
- SUCTION LINE: (2 DR & 3 DR) - 5/8", (4DR & 5DR) - 7/8"
- LIQUID LINE (ALL LENGTHS) - 3/8", LIQUID LINE W/HOT GAS DEFROST (ALL LENGTHS)- 1/2"
- AVAILABLE SHELF SIZES: WIRE SHELVES 16", 18", 20", & 22"
- SOLID SHELVES 18", 20", & 22"
- MAXIMUM SHELF SIZE = 22"

OPTIONAL FIELD INSTALLS:  
OMIT ELBOW TO RUN DRAIN STRAIGHT



BACKWARDS TO CASE REAR  
(e.g. DRAIN EVAC SYSTEM BEHIND CASE)



STANDARD 5" BASEFRAME  
FASCIA PANELS SHIP LOOSE



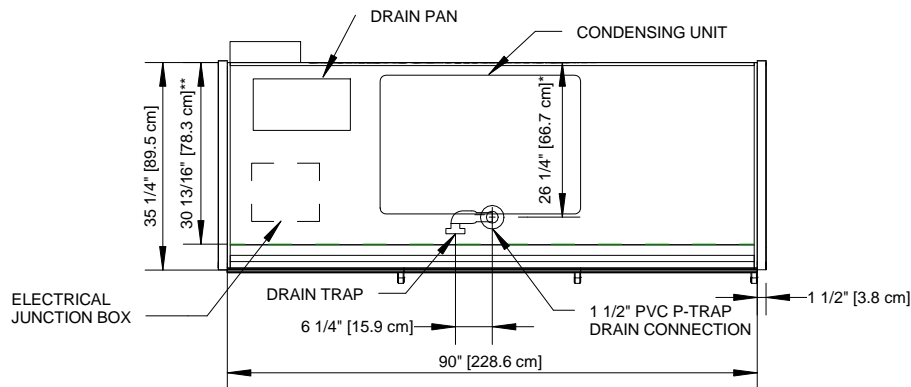
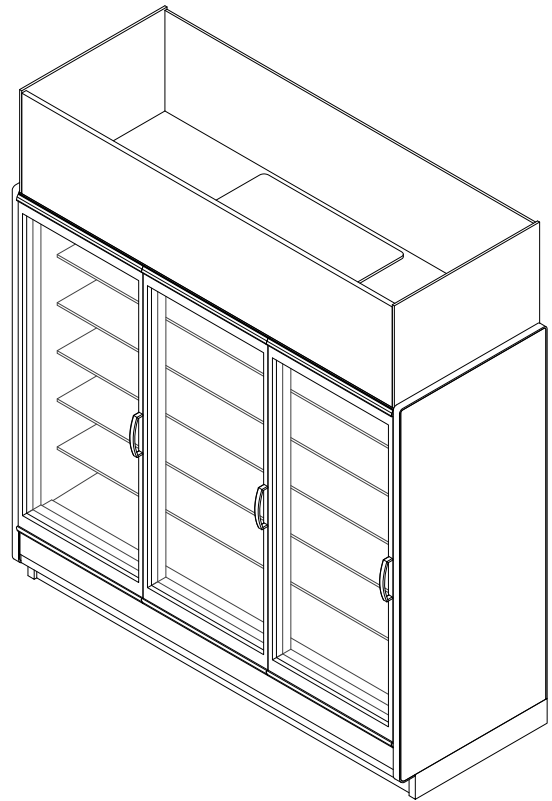
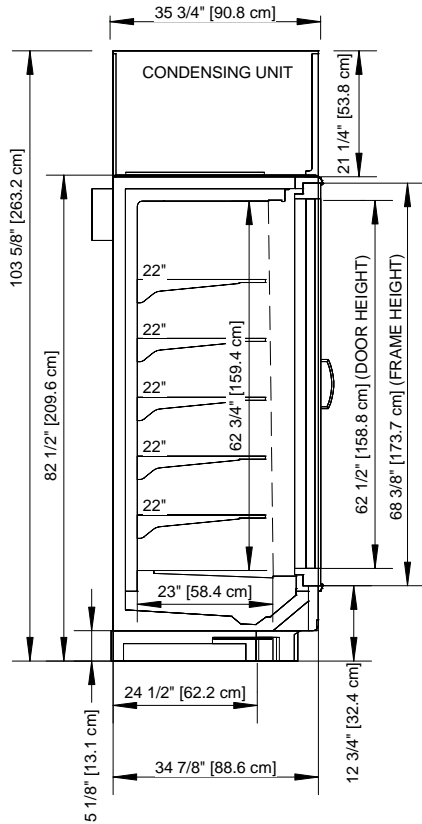
COMPONENT

ALL MEASUREMENTS ARE TAKEN PER ASHRAE-72-2005 SPECIFICATIONS. HILLPHOENIX REFRIGERATED DISPLAY CASES FOR SALE IN THE UNITED STATES MEET OR EXCEED DEPARTMENT OF ENERGY EFFICIENCY REQUIREMENTS.

### JNRBHA-PV 2 DOOR

Rev Date:	Rev #	Revision Description:
06/16/16	0	





### NOTES:

\* : STUB-UP AREA

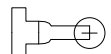
\*\* : RECOMMENDED STUB-UP CENTERLINE FOR ELECTRICAL AND HUB DRAINS

- ENDS ADD APPROXIMATELY 1" TO CASE HEIGHT, 1/2" TO THE BACK & 1" TO THE FRONT
- A 2" MINIMUM AIR GAP IS REQUIRED BETWEEN THE REAR OF THE CASE AND THE WALL
- SUCTION LINE: (2 DR & 3 DR) - 5/8", (4DR & 5DR) - 7/8"
- LIQUID LINE (ALL LENGTHS) - 3/8", LIQUID LINE W/HOT GAS DEFROST (ALL LENGTHS)- 1/2"
- AVAILABLE SHELF SIZES: WIRE SHELVES 16", 18", 20", & 22"
- SOLID SHELVES 18", 20", & 22"
- MAXIMUM SHELF SIZE = 22"

OPTIONAL FIELD INSTALLS:  
OMIT ELBOW TO RUN DRAIN STRAIGHT



BACKWARDS TO CASE REAR  
(e.g. DRAIN EVAC SYSTEM BEHIND CASE)



STANDARD 5" BASEFRAME  
FASCIA PANELS SHIP LOOSE



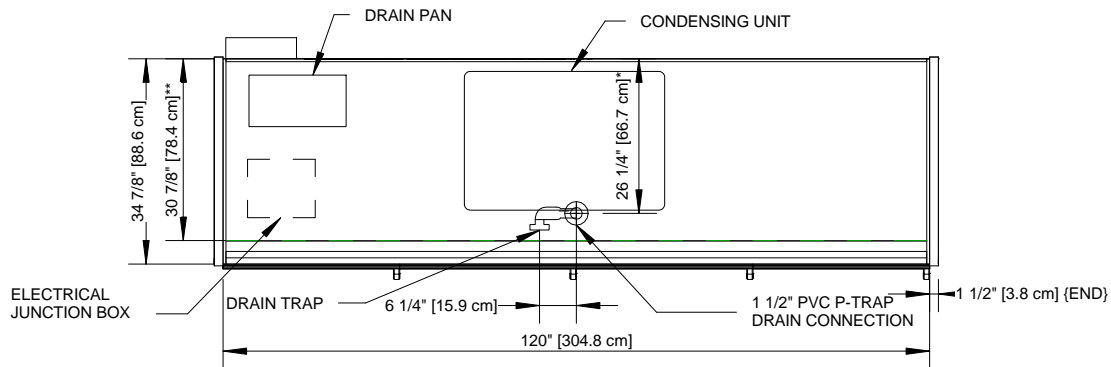
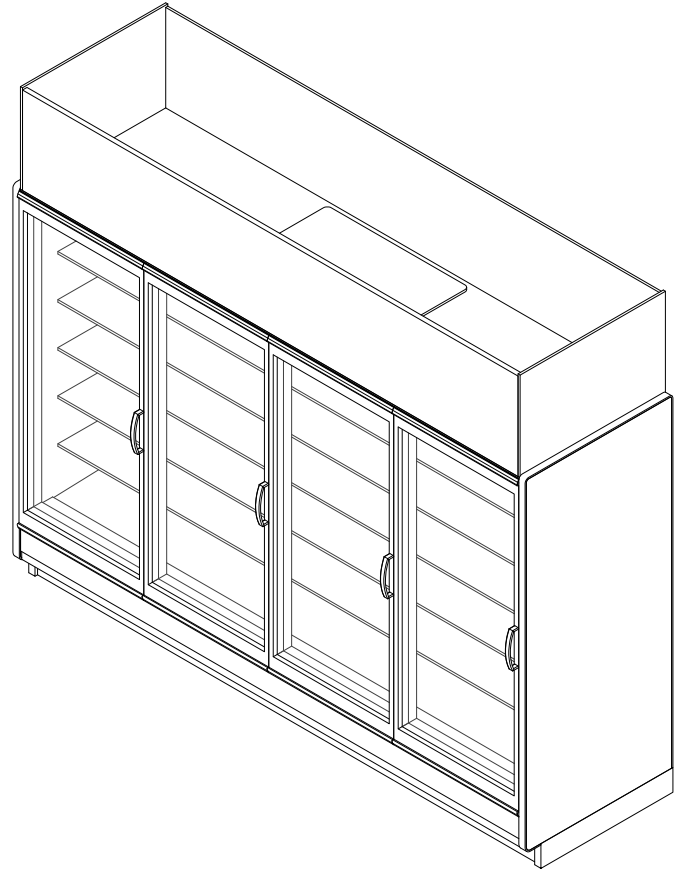
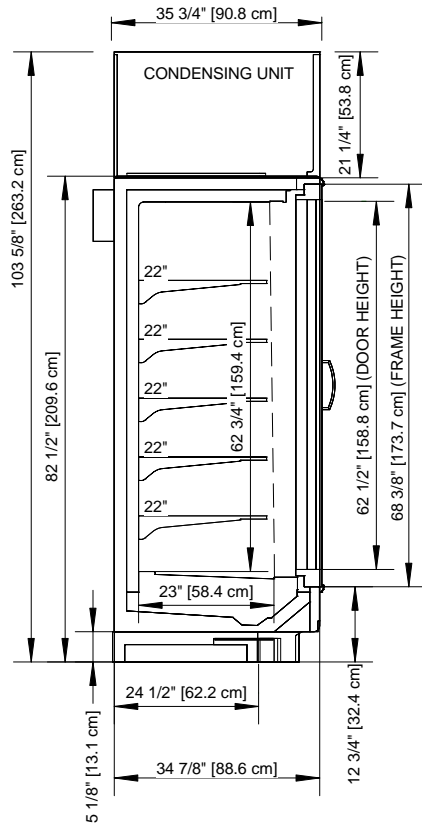
COMPONENT

### JNRBHA-PV 3 DOOR

ALL MEASUREMENTS ARE TAKEN PER ASHRAE-72-2005 SPECIFICATIONS. HILLPHOENIX REFRIGERATED DISPLAY CASES FOR SALE IN THE UNITED STATES MEET OR EXCEED DEPARTMENT OF ENERGY EFFICIENCY REQUIREMENTS.

Rev Date:	Rev #	Revision Description:
06/16/16	0	





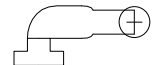
### NOTES:

\* : STUB-UP AREA

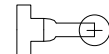
\*\* : RECOMMENDED STUB-UP CENTERLINE FOR ELECTRICAL AND HUB DRAINS

- ENDS ADD APPROXIMATELY 1" TO CASE HEIGHT, 1/2" TO THE BACK & 1" TO THE FRONT
- A 2" MINIMUM AIR GAP IS REQUIRED BETWEEN THE REAR OF THE CASE AND THE WALL
- SUCTION LINE: (2 DR & 3 DR) - 5/8", (4DR & 5DR) - 7/8"
- LIQUID LINE (ALL LENGTHS) - 3/8", LIQUID LINE W/HOT GAS DEFROST (ALL LENGTHS)- 1/2"
- AVAILABLE SHELF SIZES: WIRE SHELVES 16", 18", 20", & 22"
- SOLID SHELVES 18", 20", & 22"
- MAXIMUM SHELF SIZE = 22"

OPTIONAL FIELD INSTALLS:  
OMIT ELBOW TO RUN DRAIN STRAIGHT



BACKWARDS TO CASE REAR  
(e.g. DRAIN EVAC SYSTEM BEHIND CASE)



STANDARD 5" BASEFRAME  
FASCIA PANELS SHIP LOOSE

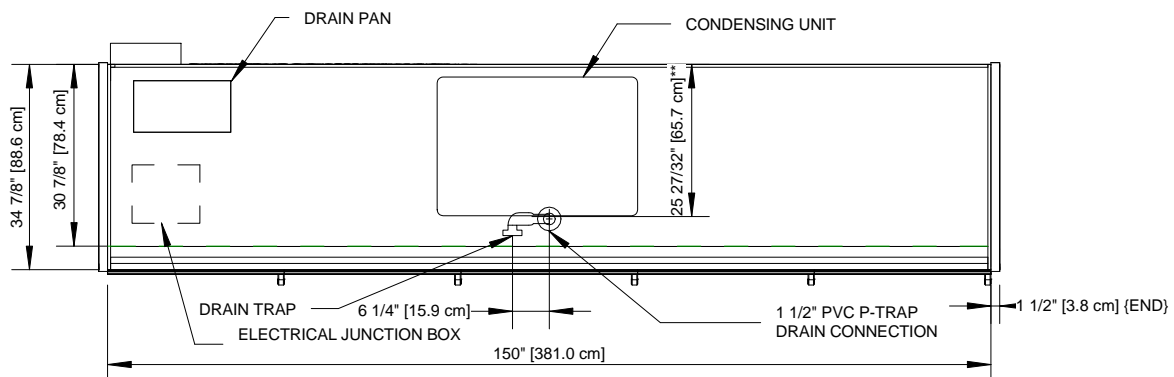
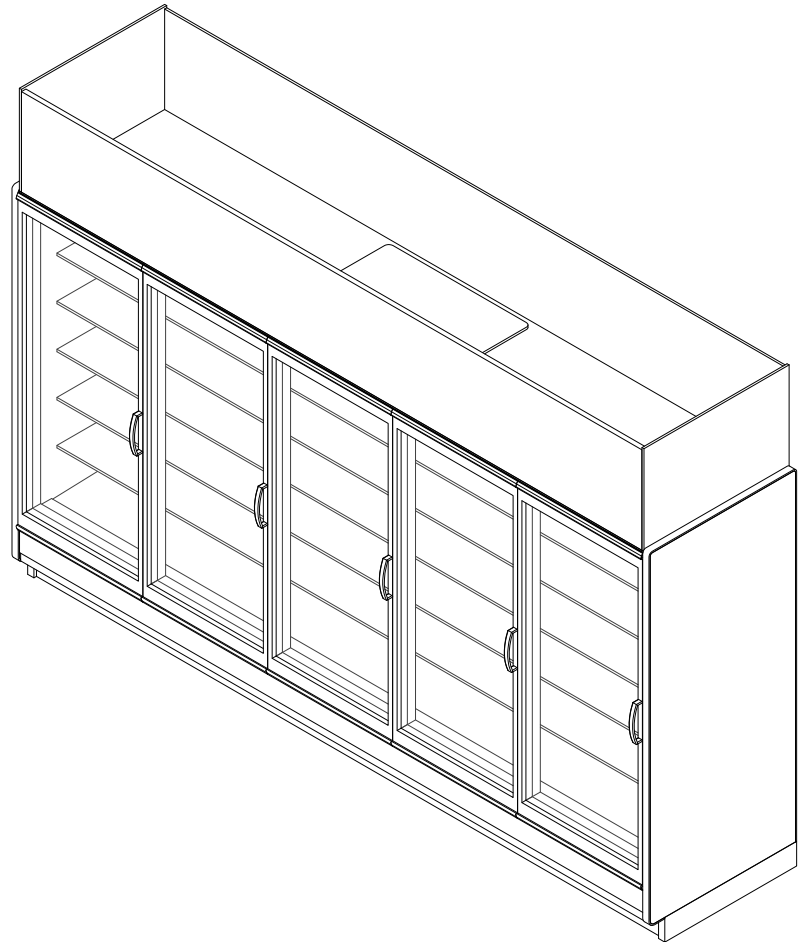
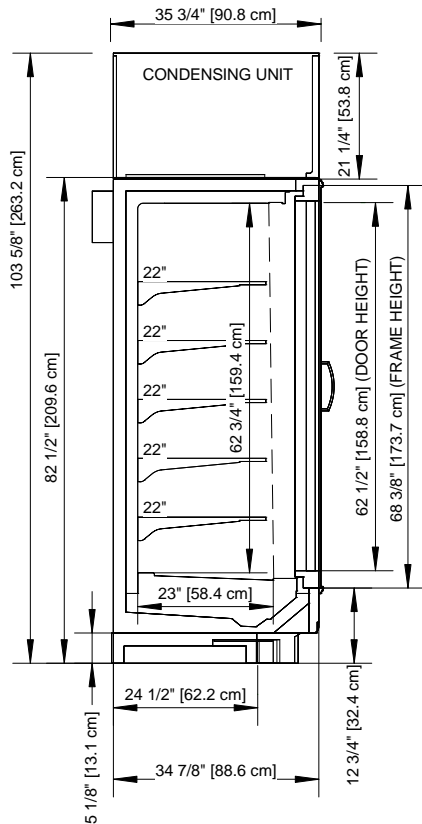


COMPONENT

ALL MEASUREMENTS ARE TAKEN PER ASHRAE-72-2005 SPECIFICATIONS. HILLPHOENIX REFRIGERATED DISPLAY CASES FOR SALE IN THE UNITED STATES MEET OR EXCEED DEPARTMENT OF ENERGY EFFICIENCY REQUIREMENTS.

### JNRBHA-PV 4 DOOR

Rev Date:	Rev #	Revision Description:
06/16/16	0	



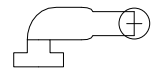
### NOTES:

\*: STUB-UP AREA

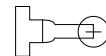
\*\*: RECOMMENDED STUB-UP CENTERLINE FOR ELECTRICAL AND HUB DRAINS

- ENDS ADD APPROXIMATELY 1" TO CASE HEIGHT, 1/2" TO THE BACK & 1" TO THE FRONT
- A 2" MINIMUM AIR GAP IS REQUIRED BETWEEN THE REAR OF THE CASE AND THE WALL
- SUCTION LINE: (2 DR & 3 DR) - 5/8", (4DR & 5DR) - 7/8"
- LIQUID LINE (ALL LENGTHS) - 3/8", LIQUID LINE W/HOT GAS DEFROST (ALL LENGTHS)- 1/2"
- AVAILABLE SHELF SIZES: WIRE SHELVES 16", 18", 20", & 22"
- SOLID SHELVES 18", 20", & 22"
- MAXIMUM SHELF SIZE = 22"

OPTIONAL FIELD INSTALLS:  
OMIT ELBOW TO RUN DRAIN STRAIGHT



BACKWARDS TO CASE REAR  
(e.g. DRAIN EVAC SYSTEM BEHIND CASE)



STANDARD 5" BASEFRAME  
FASCIA PANELS SHIP LOOSE



COMPONENT

## JNRBHA-PV 5 DOOR

ALL MEASUREMENTS ARE TAKEN PER ASHRAE-72-2005 SPECIFICATIONS. HILLPHOENIX REFRIGERATED DISPLAY CASES FOR SALE IN THE UNITED STATES MEET OR EXCEED DEPARTMENT OF ENERGY EFFICIENCY REQUIREMENTS.

Rev Date:	Rev #	Revision Description:
06/16/16	0	

**Hillphoenix**  
A DOWER COMPANY