

# 3NDML-NRG

## Multi-Deck Merchandiser with Synerg-E™ 4', 6', 8' & 12' (Beverage / Dairy / Deli / Produce)

### ELECTRICAL DATA

Case Length	Fans Per Case	High Efficiency Fans		Anti-Condensate Heater	
		120 Volts		120 Volts	
		Amps	Watts	Amps	Watts
6'	2	0.79	53	---	---

### LIGHTING DATA

Case Length	Lights Per Row	Light Length	Clearvoyant LED Lighting (Per Light Row)			
			Standard Power (Cornice or Shelf)		High Power (Cornice)	
			120 Volts		120 Volts	
			Amps	Watts	Amps	Watts
6'	2	3'	0.14	16.6	0.25	29.8

### GUIDELINES and CONTROL SETTINGS

Application	BTUH/ft		Superheat Set Point @ Bulb (°F)	Evaporator (°F)	Discharge Air (°F)	Discharge Air Velocity (FPM)
	Conventional	Parallel				
Dairy / Deli / Cut Produce	1315	1259	6 - 8	28	34	350
Produce / Beverage	1167	1119	6 - 8	32	37	350

### DEFROST CONTROLS

Defrosts Per Day	Run-Off Time (Min)	Electric Defrost		Timed-Off Defrost		Hot Gas Defrost	
		Fail-Safe (Min)	Termination Temp (°F)	Fail-Safe (Min)	Termination Temp (°F)	Fail-Safe (Min)	Termination Temp (°F)
6	6-8	---	---	42	42	---	---

### NOTES:

- BTUH/ft notes:
  - Listed BTUH/ft data represent unlighted shelves. For LED lighting, add 9 BTUH/ft per row of lighted shelving. For T8 lighted shelves, see Hillphoenix Bluebook Appendix D for BTUH, amp and watt data.
  - BTUH load increases by 132 BTUH/ft when aftermarket merchandising accessories are utilized.
- Listed evaporator temperature represents unlighted shelves. For lighted shelves and/or aftermarket merchandising accessories, reduce the listed evaporator temperature by 2°F.
- Conventional Discharge Air Control – Recommended Settings: Cut-In Temp = Discharge Air + 2°F; Cut-Out Temp = Discharge Air - 2°F.
- Listed discharge air velocity represents the average velocity at the peak of defrost.
- Temperature and defrost settings listed above are recommended start-up settings. Final operational settings may need to be adjusted for the store conditions in which the case operates.
- NOTE: "- - -" indicates that feature is not an option on this case model.

**Hillphoenix**

REVISION: 150518\_1629

A DOVER COMPANY

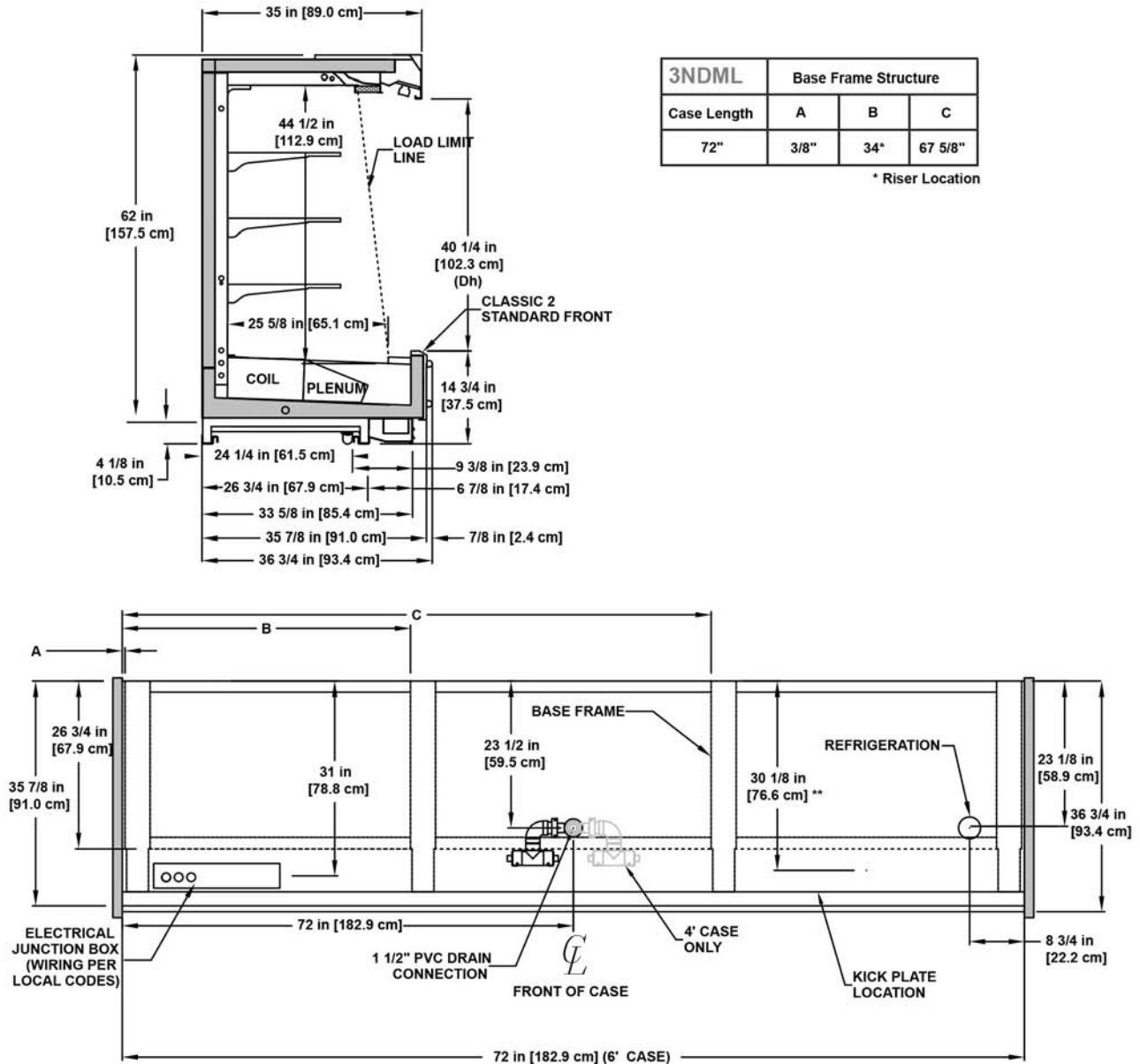


All measurements are taken per ASHRAE - 72 - 2005 specifications. Hillphoenix refrigerated display cases for sale in the United States meet or exceed Department of Energy 2012 energy efficiency requirements.

Defrost Schedule	
Defrosts per Day	Time
1	12 midnight
2	12am - 12pm
3	6am - 2pm - 10pm
4	12am-6am-12pm-6pm
6	12am-4am-8am-12pm-4pm-8pm

# 3NDML-NRG

## Multi-Deck Merchandiser with Synerg-E™ 4', 6', 8' & 12' (Beverage / Dairy / Deli / Produce)



### NOTES:

\* : STUB-UP AREA

\*\* : RECOMMENDED STUB-UP CENTERLINE FOR ELECTRICAL AND HUB DRAINS

ENDS ADD APPROXIMATELY 1" TO CASE HEIGHT

WIRING TO THE TOP ADDS APPROXIMATELY 4" TO CASE HEIGHT

A 2" MINIMUM AIR GAP IS REQUIRED BETWEEN THE REAR OF THE CASE AND A WALL

BACK PANELS ADD APPROXIMATELY 1" TO THE REAR OF THE CASE

SUCTION LINE 7/8"

LIQUID LINE WITH HOT GAS DEFROST 1/2"

AVAILABLE SHELF SIZES: 10", 12", 14", 16", 18", 20", 22" & 24"

DASHED LINES SIGNIFY AREA INSIDE THE BASE RAIL BEHIND KICK PLATE